

# Ceramic Urinal with the Radar Flushing Unit SLP 31RS



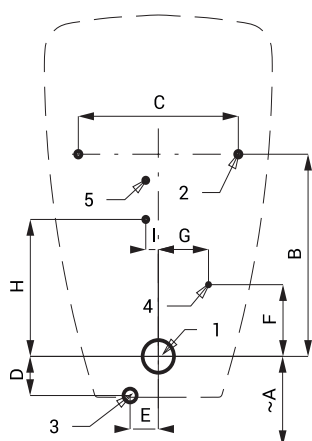
SLP 31 - LIVO

## Characteristics



- economy flushing by 1 liter of water
- easy installation by the help of paper drill template
- whole flushing unit is placed behind the urinal
- system reacts only on the direct use of the urinal (it analyses changes, which are proceeded inside of the urinal, when a liquid is flowing through)
- adjustable flushing time 0,5 - 15,5 s
- parameters adjustment by remote control SLD 04 without the necessity to dismantle the urinal from the wall (acoustic setting indication)
- automatic flushing after each 6 hours non-use
- monitoring of battery capacity (for models with index B)
- possibility to regulate a water flow by the ball valve
- radar flushing unit recharges a water to the siphon after each flushing

## Installation Drawing



- 1 - water outlet  $\varnothing$  50 mm  
2 - holes for fitting  
3 - water supply  
4 - power supply 24 V DC or 230 V AC  
5 - holes for wall plugs

SLP 31

Dimensions (mm)	A	B	C	D	E	F	G	H	I
SLP 31 - LIVO	390	310	255	60	45	110	80	210	20

\* for the height of the front edge of the urinal 650 mm above the floor

## Technical Specification

### Operating voltage

- SLP 31RS 24 V DC
- SLP 31RZ 230 V AC/50 Hz
- SLP 31RB 6 V

### Power input

- operating by 24 V DC 8 W
- operating by 6 V 3 W

### Recommended flow pressure

0,1 - 0,6 MPa

### Rate of flow

18 l/min (inf. data)

### Water inlet

male thread G 1/2"

### Water outlet

inlet fitting with a rubber sealing



SLA 11



SLA 11A



SLA 11B



SLA 11C

## Supply Specification

- SLP 31RS - Supply No. 11315 ceramic urinal with the radar flushing unit on the mounting rail,  
SLP 31RZ - Supply No. 01315 electromagnetic valve, connecting hoses, angle valve with filter and check valve,  
SLP 31RB - Supply No. 11317 inlet fitting with a rubber seal, siphon, mounting set, paper drill template, power supply (SLP 31RZ), 4 pcs. AA alkaline batteries 1,5 V, 2700 mAh with battery case (SLP 31RB)

## Recommended Accessories

- SLZ 01Y - Supply No. 05012 power supply 24 V DC for operating of max. 5 pcs. of flushing units  
SLZ 01Z - Supply No. 05011 power supply 24 V DC for operating of max. 9 pcs. of flushing units  
SLZ 04Y - Supply No. 05042 power supply 24 V DC on DIN rail, for operating of max. 5 pcs. of flushing units  
SLZ 04Z - Supply No. 05041 power supply 24 V DC on DIN rail, for operating of max. 9 pcs. of flushing units  
SLZ 04X - Supply No. 10049 power supply 24 V DC on DIN rail, for operating of max. 15 pcs. of flushing units  
SLZ 06 - Supply No. 05060 power supply 24 V DC for operating of max. 1 pc. of flushing unit  
SLD 04 - Supply No. 07040 remote control for an adjustment of parameters  
SLA 11 - Supply No. 06110 deodorising urinal screen - orange colour, mango scent  
SLA 11A - Supply No. 06111 deodorising urinal screen - red colour, kiwi and grapefruit scent  
SLA 11B - Supply No. 06112 deodorising urinal screen - transparent colour, honeysuckle scent  
SLA 11C - Supply No. 06113 deodorising urinal screen - blue colour, cotton bloom scent  
SLR 01L - Supply No. 08015 mounting frame to the plasterboard for the urinal with radar flushing unit on the mounting rail  
SLA 36 - Supply No. 06360 set of 4 pcs. alkaline batteries AA 1,5 V, 2700 mAh (for models with index B)